



NCKX6 Polyclonal Antibody

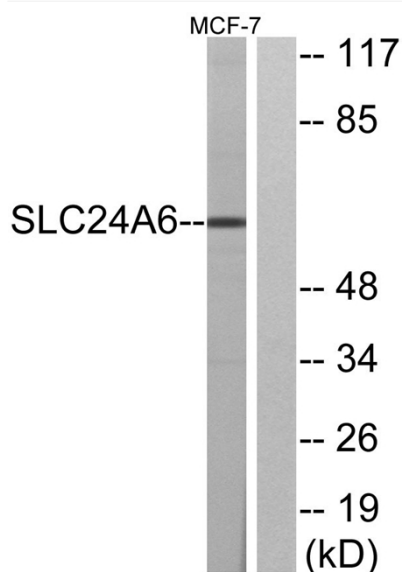
Catalog No	YP-Ab-16481
Isotype	IgG
Reactivity	Human;Rat;Mouse;
Applications	WB;IHC;IF;ELISA
Gene Name	SLC24A6
Protein Name	Sodium/potassium/calcium exchanger 6
Immunogen	The antiserum was produced against synthesized peptide derived from human SLC24A6. AA range:494-543
Specificity	NCKX6 Polyclonal Antibody detects endogenous levels of NCKX6 protein.
Formulation	Liquid in PBS containing 50% glycerol, 0.5% BSA and 0.02% sodium azide.
Source	Polyclonal, Rabbit,IgG
Purification	The antibody was affinity-purified from rabbit antiserum by affinity-chromatography using epitope-specific immunogen.
Dilution	WB: 1/500 - 1/2000. ELISA: 1/20000.. IF 1:50-200
Concentration	1 mg/ml
Purity	≥90%
Storage Stability	-20°C/1 year
Synonyms	SLC24A6; NCKX6; NCLX; Sodium/potassium/calcium exchanger 6; Na(+)/K(+)/Ca(2+)-exchange protein 6; Solute carrier family 24 member 6
Observed Band	60kD
Cell Pathway	Mitochondrion inner membrane ; Multi-pass membrane protein .
Tissue Specificity	Present in pancreatic beta-cells (at protein level).
Function	function:Transports Ca(2+) in exchange for either Li(+) or Na(+), explaining how Li(+) catalyzes Ca(2+) exchange. In contrast to other members of the family its function is independent of K(+).,miscellaneous:Strongly inhibited by zinc.,similarity:Belongs to the sodium/potassium/calcium exchanger family. SLC24A subfamily.,
Background	SLC24A6 belongs to a family of potassium-dependent sodium/calcium exchangers that maintain cellular calcium homeostasis through the electrogenic countertransport of 4 sodium ions for 1 calcium ion and 1 potassium ion (Cai and Lytton, 2004 [PubMed 14625281]).[supplied by OMIM, Mar 2008],
matters needing attention	Avoid repeated freezing and thawing!

**Usage suggestions**

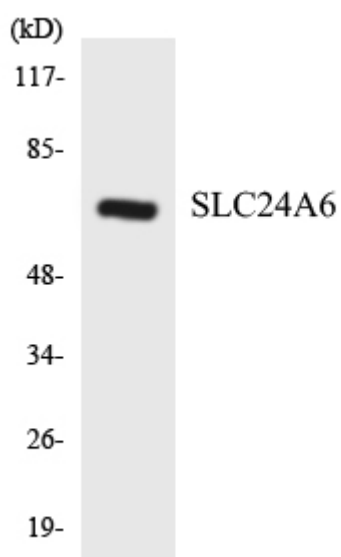
This product can be used in immunological reaction related experiments. For more information, please consult technical personnel.



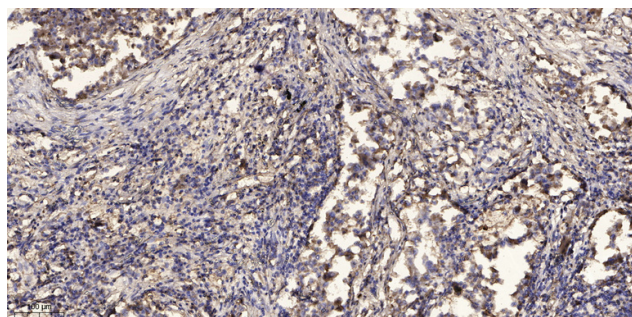
Products Images



Western blot analysis of lysates from MCF-7 cells, using SLC24A6 Antibody. The lane on the right is blocked with the synthesized peptide.



Western blot analysis of the lysates from HeLa cells using SLC24A6 antibody.



Immunohistochemical analysis of paraffin-embedded human Squamous cell carcinoma of lung. 1, Antibody was diluted at 1:200(4° overnight). 2, Tris-EDTA,pH9.0 was used for antigen retrieval. 3,Secondary antibody was diluted at 1:200(room temperature, 45min).